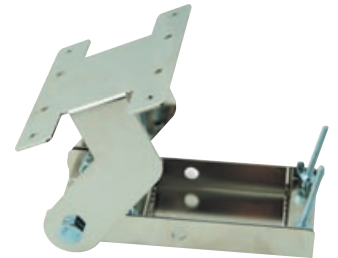


Long Range Proximity Reader

RF245-3 RF245-5 RF245-10



RF245-3 / RF245-5 / RF245-10

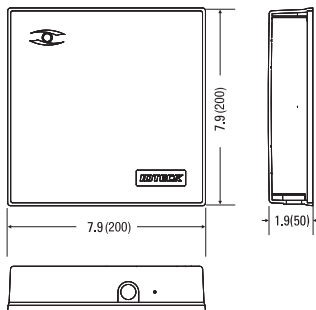


Mounting Bracket



RF Card

RF245-3 / RF245-5 / RF245-10



KEY Features

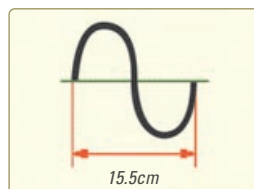
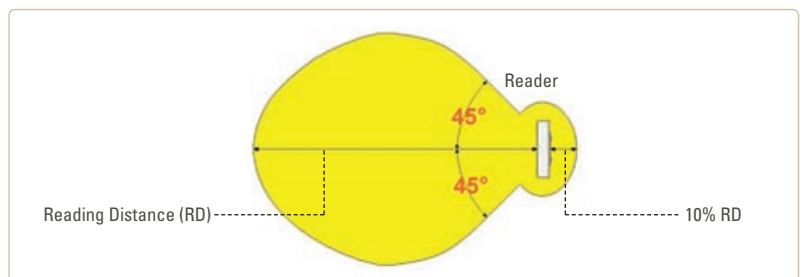
RF245

- Long Range Reade RF245-3 : 3m(10feet), RF245-5: 5m(17feet), RF245-10: 10m(34feet)
- 2.4GHz ISM Band
- Encrypted tag ID and Secure Protocols between Reader and Tags
- Multiple Tags Identification (30 Tags / Sec)
- 90°, One-directional Antenna
- 26bit Wiegand and RS232 Output Format
- Direct Bargate Output (Open Collector: 1sec)
- OTR (One Time Reading) and HOLD Control Input
- Applications : Parking Control, Logistics Tracking, Vehicle Tracking, Asset Control, Personal Tracking

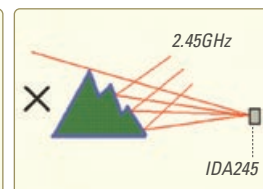
Steady and Stable Read Range

Simple to Use / Multiple Purpose / Outdoor Capacity

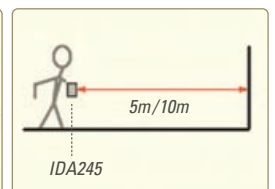
- Perfect for Long Range Parking Control
- Logistics Tracking
- Vehicle Tracking
- Asset Control
- Personal Tracking



Short Wavelength



High Directivity (Reflecting)



Sight of Distance



Specifications

Model	RF245-3M / RF245-5M / RF245-10M
CPU	8bit Microprocessor and ISM Band Receiver
Read Range	RF245-3: 3m(10feet), RF245-5: 5m(17feet), RF245-10: 10m(34feet),
Reading Time	250ns
Frequency	2.402GHz, ISM Band
Modulation	Encrypted GFSK
Directivity	90°, One-directional
Receiver Gain	Better than -80dBm
Power / Current	DC12V / Max.50mA
Output Format	26bit Wiegand and RS232 / Bargate Output
RS232 Format	9600bps, parity none, 8 Data bits, 1 Stop bit
Bargate Output	Low Active Pulse (1sec.), Open Collector Output, Max. 100mA
OTR (One Time Reading) Input	Low Active Input, DC12V, Max. 50mA Current Drain
HOLD Input	Low Active Input, DC12V, Max. 50mA Current Drain, Vehicle Detector Input
LED Indicator	Built-in Red Color LED
Beeper	Built-in Piezo Buzzer
Operating Temperature	-35 to +65° C (-31 to +149° F)
Operating Humidity	10% to 90% relative humidity non-condensing
Color / Material	Ivory / Polycarbonate / Anodized Aluminum
Dimension (W x H x T) / Weight	7.9" x 7.9" x 1.9" (200mm x 200mm x 50mm) / 1.36kg (3.0 lbs)

